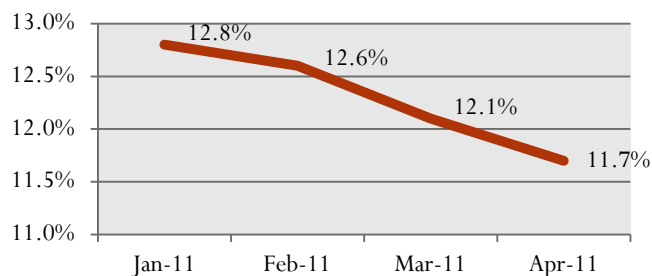


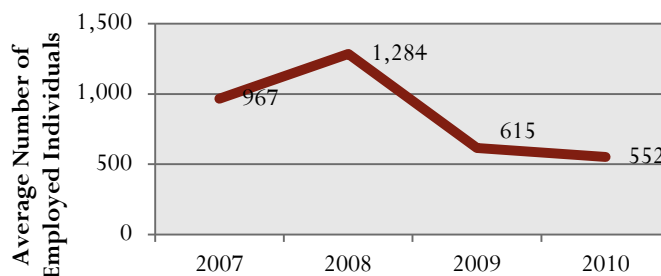
# Wilkes County

## SNAPSHOT

**Wilkes County Unemployment Rates, January-April 2011**



**Average Employment in Wilkes County Construction Sector**

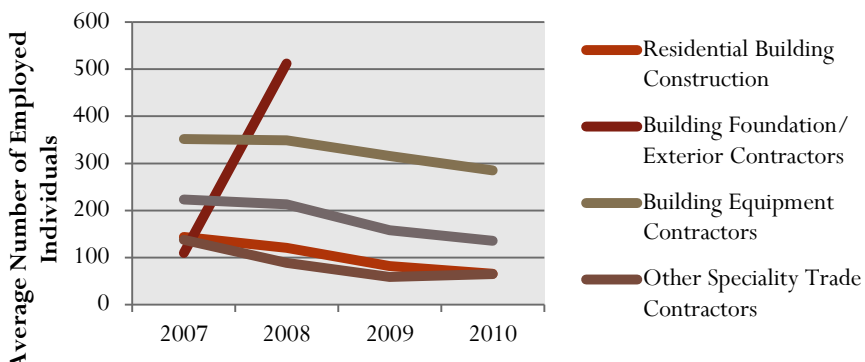


[SOURCE: ESC OF NC, LABOR MARKET INFORMATION DIVISION, QUARTERLY CENSUS OF EMPLOYMENT AND WAGE (QCEW), 2007-2010]

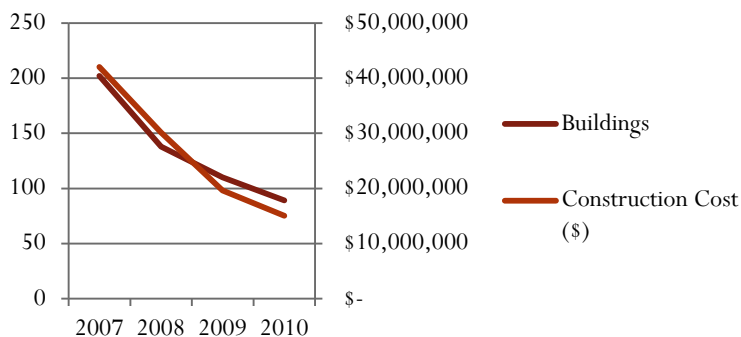
### Quick Facts

- Wilkes County covers 760 square Miles
- Population of 69,340 (2010 Census)

**Average Employment by Industry, Wilkes County Construction Sector**



**Reported, Privately-Owned, Single Family Residential Building Permits in Wilkes County**

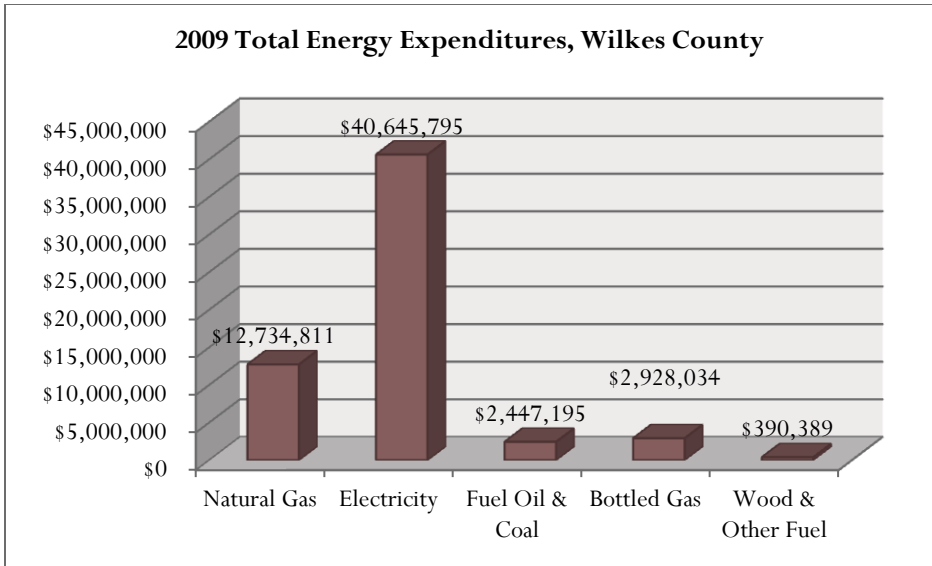


NOTE: DATA IS MISSING WHEN EITHER (A) 80% OF THE EMPLOYMENT AND/OR WAGES CAME FROM ONE EMPLOYER, (B) THERE WERE TWO OR FEW EMPLOYERS IN THAT INDUSTRY, OR (C) THERE WAS NO PRESENCE OF THAT INDUSTRY FOR THAT YEAR.

[SOURCE: ESC OF NC, LABOR MARKET INFORMATION DIVISION, QUARTERLY CENSUS OF EMPLOYMENT AND WAGE (QCEW), 2007-2010]

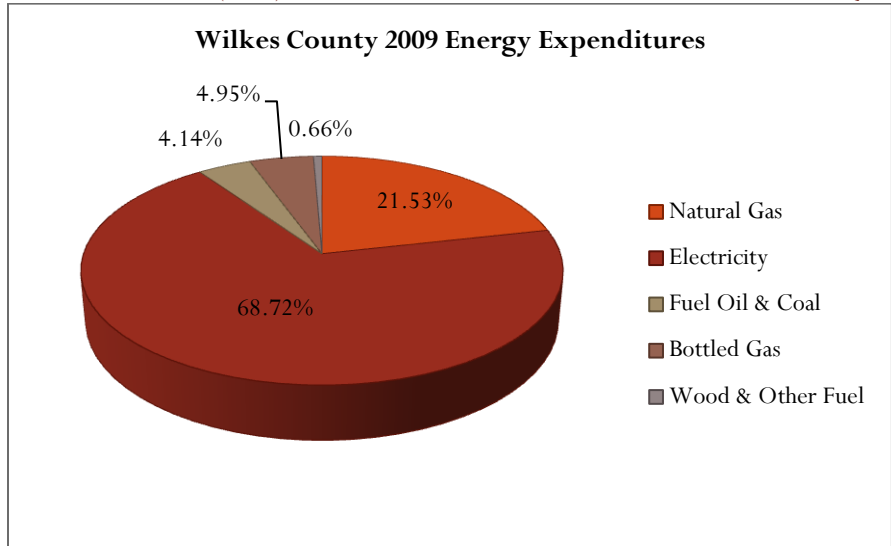
[SOURCE: U.S. CENSUS BUREAU]

### 2009 Total Energy Expenditures, Wilkes County



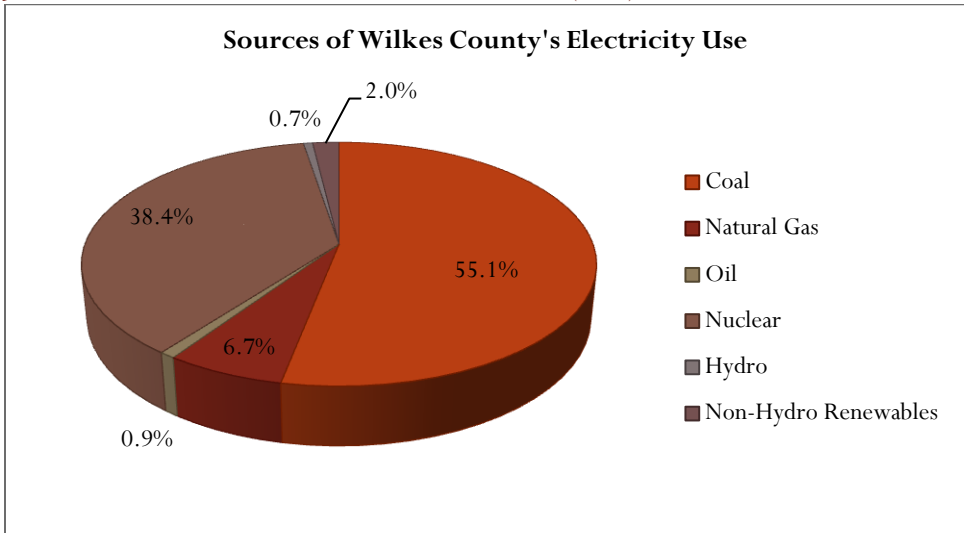
[SOURCE: ECONOMIC DEVELOPMENT INTELLIGENCE SYSTEM (EDIS), COMMUNITY DEMOGRAPHICS DATABASE, COUNTY REPORT]

### Wilkes County 2009 Energy Expenditures



[SOURCE: ECONOMIC DEVELOPMENT INTELLIGENCE SYSTEM (EDIS), COMMUNITY DEMOGRAPHICS DATABASE, COUNTY REPORT]

### Sources of Wilkes County's Electricity Use



[SOURCE: DUKE ENERGY; PROGRESS ENERGY; REPRESENTS NEARLY 100% OF WATAUGA COUNTY'S ELECTRICITY USAGE]

*WILKES COUNTY HOUSING  
STOCK:*

*Pre-1970 Homes: 10,992 (35.76%)*

*Post-1970 Homes: 19,746 (64.24%)*

*Manufactured Homes: 8,841 (28.76%)*

*[Source: NCSEA 2011 Clean Energy Data Book]*

*WILKES COUNTY  
ELECTRICITY USAGE &  
POTENTIAL SAVINGS:*

*Avg. Annual Residential Usage:  
13,741 kWh/year*

*Avg. Residential Elec. Rate:  
\$0.094225/kWh*

*1<sup>st</sup> Year Savings from Retrofitting All  
Pre-1970 Homes to be 30% More  
Energy Efficient: **\$4,269,553.50***

*1<sup>st</sup> Year Savings from Retrofitting All  
Manufactured Home to be 30% More  
Energy Efficient: **\$3,434,054.09***

*Note: Average NC electricity usage is based off of  
EMC customer consumption; Energy savings  
calculations are based off average NC electricity  
consumption & average Wilkes County electricity  
rate.*

*[Sources: NCSEA 2011 Clean Energy Data Book;  
local utilities excluding EnergyUnited EMC &  
Rutherford EMC]*

*Energy Efficiency & Renewable  
Energy Quick Facts:*

*Wilkes County Has...*

- 5 Registered or Certified Energy Efficient Buildings (commercial & government)*
- 1 Existing Clean Energy Firm*
- 5 Registered Solar Systems (electric/PV only)*
- 2 Registered Geothermal Systems (vertical bore only)*
- 14.06 kW of installed solar capacity = 14,060 kWh annually*

*[Source: NCSEA 2011 NC Clean Energy Data Book]*