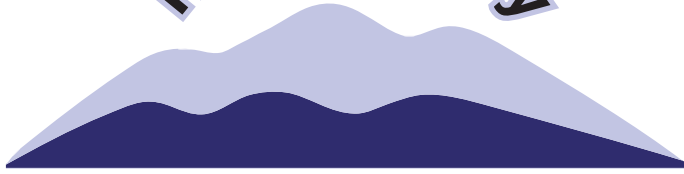


# High Country



## Workforce Development Board

# Labor Market Information Update

October 2011

### Civilian Labor Force Estimates\* (Not Seasonally Adjusted)

		August 2011	July 2011	August 2010
Alleghany	Labor Force	4,685	4,568	4,766
	Employed	4,162	4,057	4,295
	Unemployed	523	511	471
	Rate %	11.2	11.2	9.9
Ashe	Labor Force	12,185	12,015	12,448
	Employed	10,882	10,642	11,079
	Unemployed	1,303	1,373	1,369
	Rate %	10.7	11.4	11.0
Avery	Labor Force	8,055	8,160	7,981
	Employed	7,240	7,337	7,237
	Unemployed	815	823	744
	Rate %	10.1	10.1	9.3
Mitchell	Labor Force	6,677	6,627	6,893
	Employed	5,908	5,846	6,166
	Unemployed	769	781	727
	Rate %	11.5	11.8	10.5
Watauga	Labor Force	24,332	24,697	23,687
	Employed	22,388	22,733	21,910
	Unemployed	1,944	1,964	1,777
	Rate %	8.0	8.0	7.5
Wilkes	Labor Force	29,408	29,523	29,113
	Employed	25,840	25,925	25,283
	Unemployed	3,568	3,598	3,830
	Rate %	12.1	12.2	13.2
Yancey	Labor Force	7,456	7,225	7,629
	Employed	6,590	6,359	6,830
	Unemployed	866	866	799
	Rate %	11.6	12.0	10.5
High Country	Labor Force	92,798	92,815	92,517
	Employed	83,010	82,899	82,800
	Unemployed	9,788	9,916	9,717
	Rate %	10.5	10.7	10.5
Statewide	Labor Force	4,510,234	4,559,191	4,502,867
	Employed	4,038,915	4,084,865	4,048,649
	Unemployed	471,319	474,326	454,218
	Rate %	10.4	10.4	10.1

Source: LAUS, LMID

\*August 2011 data are preliminary, while July 2011 data are revised and August 2010 data are benchmarked.

### Quick Facts:

#### North Carolina Unemployment Rates August 2011

Seasonally Adjusted: 10.4

Not Seasonally Adjusted: 10.4

Source: LAUS, LMID

#### NC UI Average Weekly Benefit August 2011: \$280.48

#### NC Maximum Weekly Benefit Amount August 2011: \$522

Source: WRER, LMID

#### Gender of Initial Claims High Country WDB\* August 2011

Male: 63%

Female: 37%

Source: WRER, LMID

\*May not sum due to rounding and unreported category.

#### Age Ranges of Initial Claimants High Country WDB\* August 2011

16-19 — 1%

20-24 — 10%

25-34 — 19%

35-44 — 21%

45-54 — 26%

55-64 — 19%

65+ — 4%

Source: WRER, LMID

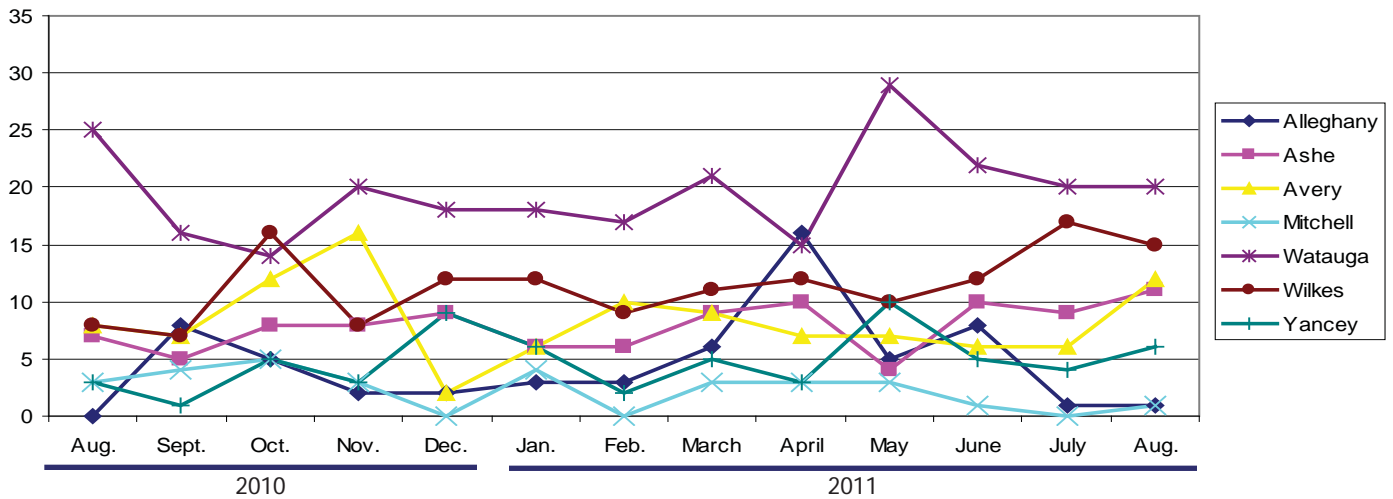
\*May not sum due to rounding and unreported category.

#### Individuals Receiving Benefits

	August 2011	August 2010
Alleghany	122	187
Ashe	382	446
Avery	166	230
Mitchell	191	198
Watauga	302	432
Wilkes	807	1,354
Yancey	175	181
Statewide	112,015	133,061

Source: WRER, LMID

## New Corporations



Source: Department of the NC Secretary of State

## Duration of Benefits By County 12-Month Period Ending\*

	Aug. 31, 2011	Aug. 31, 2010
Alleghany	15.3	15.6
Ashe	15.3	18.0
Avery	14.9	16.9
Mitchell	14.1	17.0
Watauga	16.7	17.3
Wilkes	13.6	18.1
Yancey	13.1	15.1
Statewide	16.4	18.4

\*Duration is the number of weeks compensated for the year divided by the number of first payments.

## Unemployment Insurance Claims August 2011

	Initial Claims	Benefits Paid
Alleghany	53	\$75,835
Ashe	243	\$278,027
Avery	91	\$128,694
Mitchell	86	\$172,069
Watauga	179	\$299,587
Wilkes	526	\$666,874
Yancey	113	\$176,927
Statewide	52,821	\$117,987,637

Source: WRER, LMID

## High Country WDB Occupations With the Most Ads\* August 2011

Occupation	Volume
Registered Nurses	74
Customer Service Representatives	45
Physical Therapists	42
Occupational Therapists	38
First-Line Supervisors/Managers of Retail Sales Workers	35
Truck Drivers, Heavy and Tractor-Trailer	27
Nursing Aides, Orderlies, and Attendants	25
Retail Salespersons	23
First-Line Supervisors/Managers of Food Preparation and Serving Workers	21
Personal and Home Care Aides	21
Sales Representatives, Wholesale and Manufacturing, Except Technical and Scientific Products	20
Licensed Practical and Licensed Vocational Nurses	19

Source: The Conference Board Help Wanted OnLine

\*Data represents labor demand, measured by online advertised vacancies. Data is revised.

Labor Market Information Division  
Employment Security Commission of North Carolina  
P.O. Box 25903 Raleigh, 27611  
Phone: (919) 733-2936 Fax: (919) 733-8662  
Email: [esc.lmi.inquiries@ncesc.gov](mailto:esc.lmi.inquiries@ncesc.gov) Website: [www.ncesc.com](http://www.ncesc.com)

