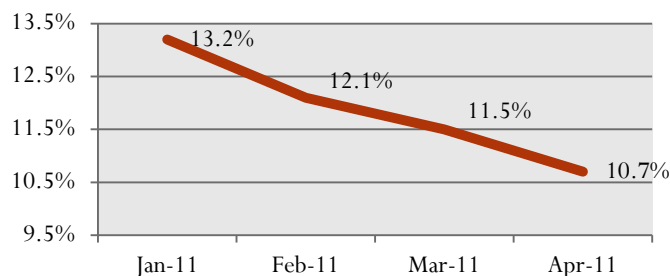


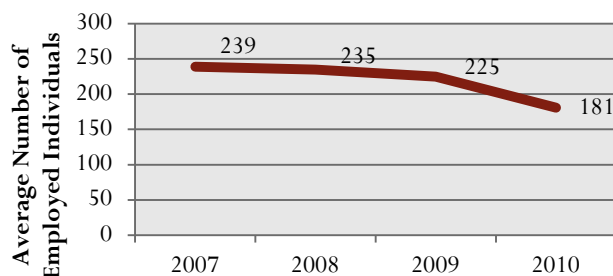
Mitchell County

SNAPSHOT

Mitchell County Unemployment Rates, January-April 2011



Average Employment in Mitchell County Construction Sector

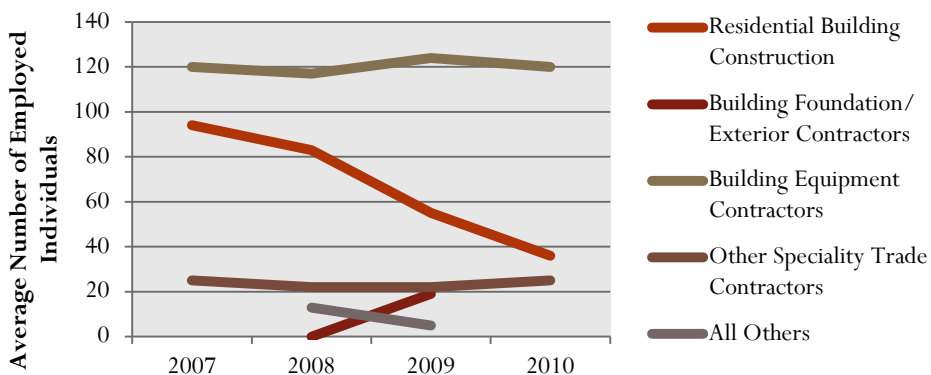


[SOURCE: ESC OF NC, LABOR MARKET INFORMATION DIVISION, QUARTERLY CENSUS OF EMPLOYMENT AND WAGE (QCEW), 2007-2010]

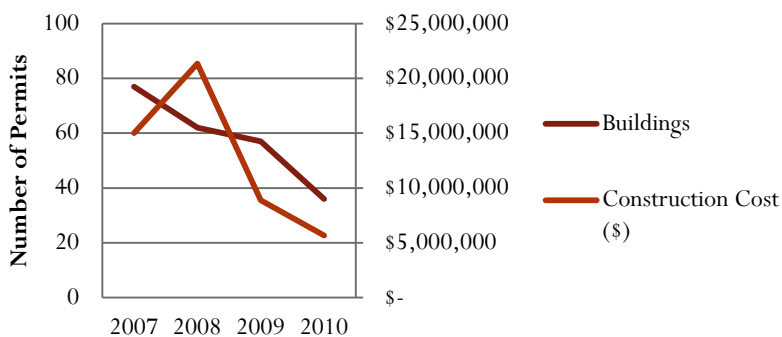
Quick Facts

- Mitchell County covers 222 square Miles
- Population of 15,687 (2000 Census)

Average Employment by Industry, Mitchell County Construction Sector



Reported Privately-Owned, Single Family, Residential Building Permits & Construction Costs in Mitchell County

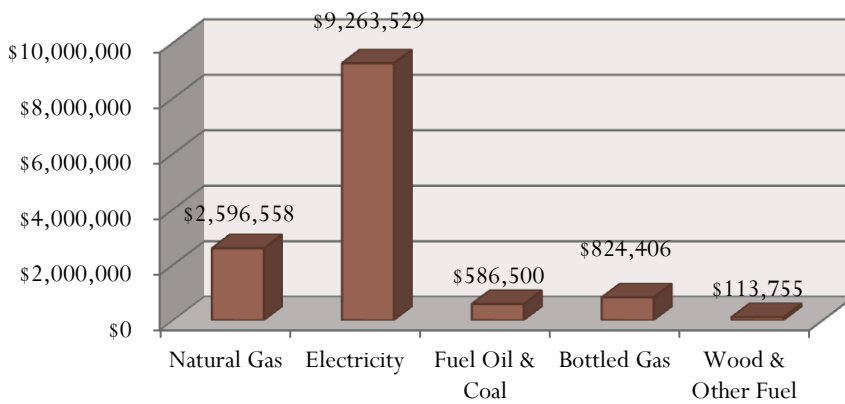


NOTE: DATA IS MISSING WHEN EITHER (A) 80% OF THE EMPLOYMENT AND/OR WAGES CAME FROM ONE EMPLOYER, (B) THERE WERE TWO OR FEW EMPLOYERS IN THAT INDUSTRY, OR (C) THERE WAS NO PRESENCE OF THAT INDUSTRY FOR THAT YEAR.

[SOURCE: ESC OF NC, LABOR MARKET INFORMATION DIVISION, QUARTERLY CENSUS OF EMPLOYMENT AND WAGE (QCEW), 2007-2010]

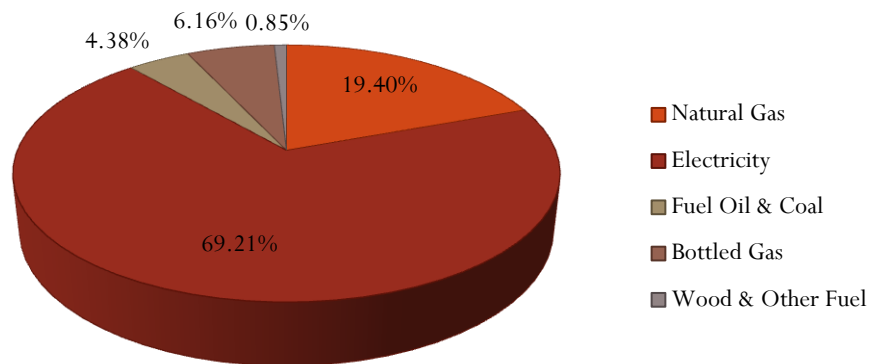
[SOURCE: U.S. CENSUS BUREAU]

2009 Total Energy Expenditures, Mitchell County



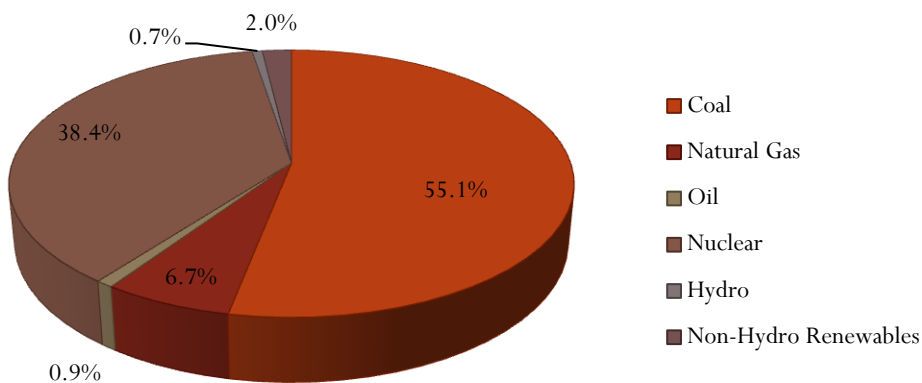
[SOURCE: ECONOMIC DEVELOPMENT INTELLIGENCE SYSTEM (EDIS), COMMUNITY DEMOGRAPHICS DATABASE, COUNTY REPORT]

Mitchell County 2009 Energy Expenditures



[SOURCE: ECONOMIC DEVELOPMENT INTELLIGENCE SYSTEM (EDIS), COMMUNITY DEMOGRAPHICS DATABASE, COUNTY REPORT]

Sources of Mitchell County's Electricity Use



[SOURCE: PROGRESS ENERGY; REPRESENTS THE MAJORITY OF MITCHELL COUNTY'S ELECTRICITY USE]

*MITCHELL COUNTY HOUSING
STOCK:*

Pre-1970 Homes: 3,449 (43.55%)

Post-1970 Homes: 4,470 (56.45%)

Manufactured Homes: 1,762 (22.25%)

[Source: NCSEA 2011 Clean Energy Data Book]

*MITCHELL COUNTY
ELECTRICITY USAGE &
POTENTIAL SAVINGS:*

*Avg. Annual Residential Usage:
13,741 kWh/year*

*Avg. Residential Elec. Rate:
\$0.082909/kWh*

*1st Year Savings from Retrofitting All
Pre-1970 Homes to be 30% More
Energy Efficient: **\$1,178,784.63***

*1st Year Savings from Retrofitting All
Manufactured Homes to be 30% More
Energy Efficient: **\$602,208.91***

*Note: Average NC electricity usage is based off of
EMC customer consumption; Energy savings
calculations are based off average NC electricity
consumption & average Mitchell County electricity
rate.*

*[Sources: NCSEA 2011 Clean Energy Data Book;
local utilities excluding EnergyUnited EMC &
Rutherford EMC]*

*Energy Efficiency & Renewable
Energy Quick Facts:*

Mitchell County Has...

- *1 Registered or Certified Energy Efficient Building (commercial & government)*
- *2 Existing Clean Energy Firms*
- *1 Registered Solar System (electric)*
- *2 Registered Wind Systems*
- *1 Registered Geothermal System (vertical bore only)*
- *8.74-kW of installed renewable energy capacity = 10,996 kWh annually*

[Source: NCSEA 2011 NC Clean Energy Data Book]