

High Country Workforce Development Board



468 New Market Blvd

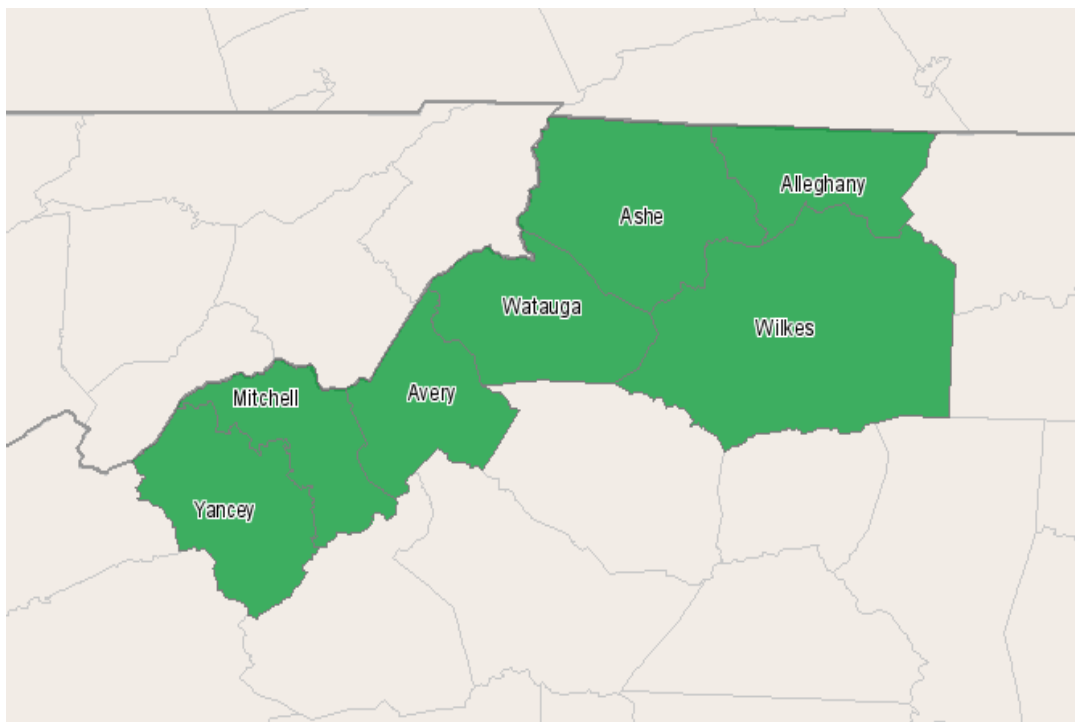
Boone, North Carolina 28607

828.265.5434

www.highcountrywdb.com

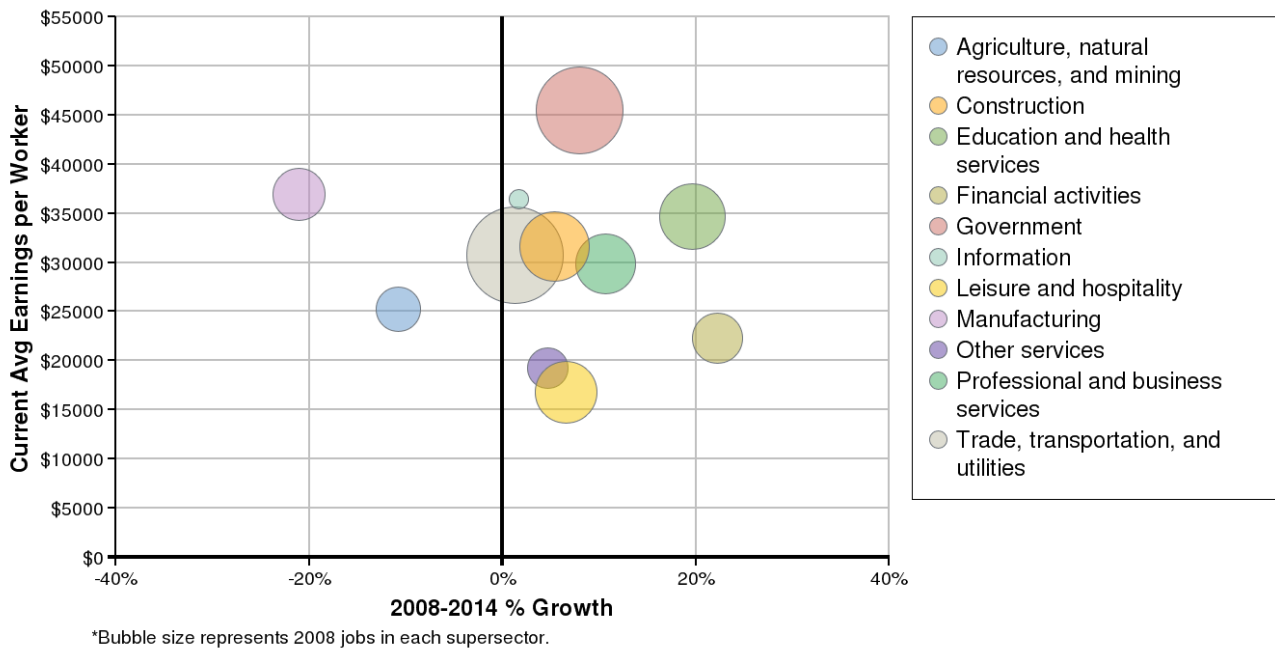
Economic Forecaster - Custom Report

2008 - 2014



Industry Size and Growth

2008 - 2014 Size and Growth

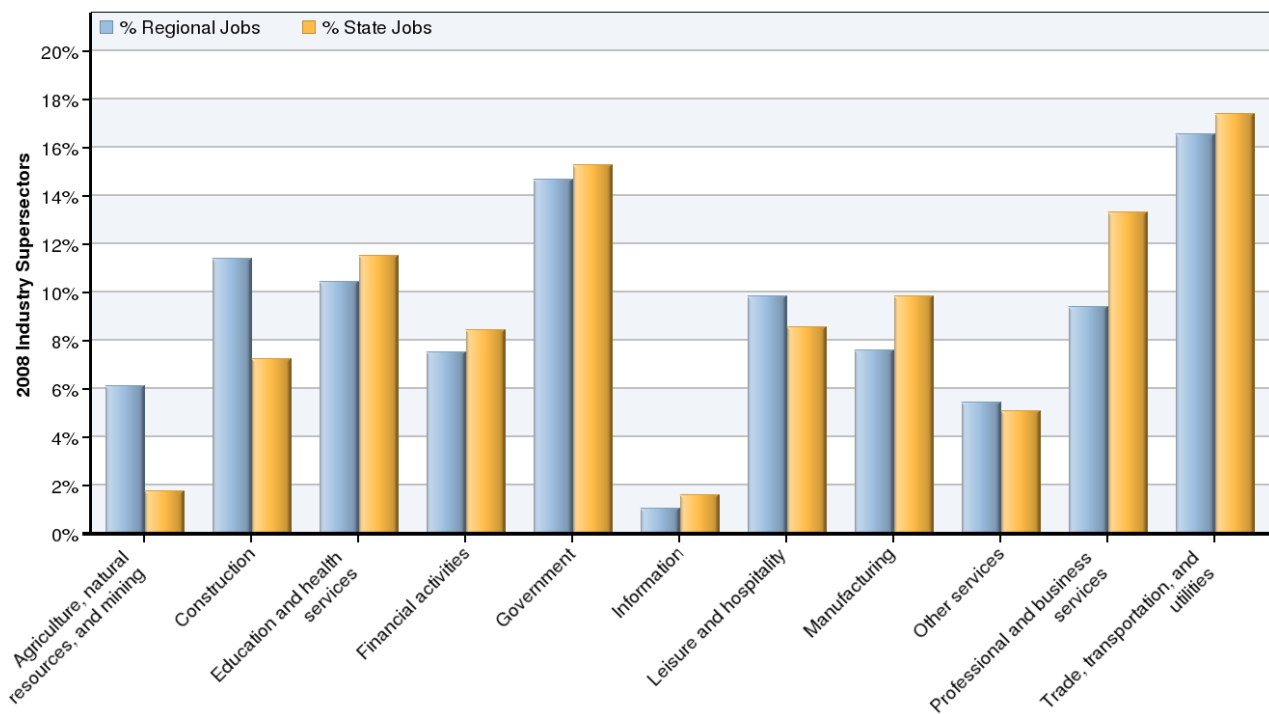


Description	2008 Jobs	2014 Jobs	Growth	% Growth	Current EPW
Agriculture, natural resources, and mining	6,845	6,109	-736	-11%	\$25,286
Construction	12,715	13,402	687	5%	\$31,580
Education and health services	11,676	13,966	2,290	20%	\$34,628
Financial activities	8,393	10,262	1,869	22%	\$22,294
Government	16,393	17,707	1,314	8%	\$45,436
Information	1,153	1,172	19	2%	\$36,471
Leisure and hospitality	10,973	11,694	721	7%	\$16,832
Manufacturing	8,469	6,689	-1,780	-21%	\$36,900
Other services	6,066	6,352	286	5%	\$19,277
Professional and business services	10,516	11,637	1,121	11%	\$29,875
Trade, transportation, and utilities	18,497	18,728	231	1%	\$30,740
Total	111,696	117,719	6,023	5%	\$30,902

Source: EMSI Complete Employment - 1st Quarter 2010

Note: EPW = Earnings Per Worker. This figure reflects total earnings, including benefits and all forms of employer contributions as well as the earnings of proprietors and self-employed workers, collected from tax returns by the Bureau of Economic Analysis (BEA). It is the total income of the entire regional industry divided by the number of regional workers in the industry. Therefore, the EPW number is generally higher than average salaries by industry from other sources and should **not** be treated as "average salary."

2008 Industrial Makeup

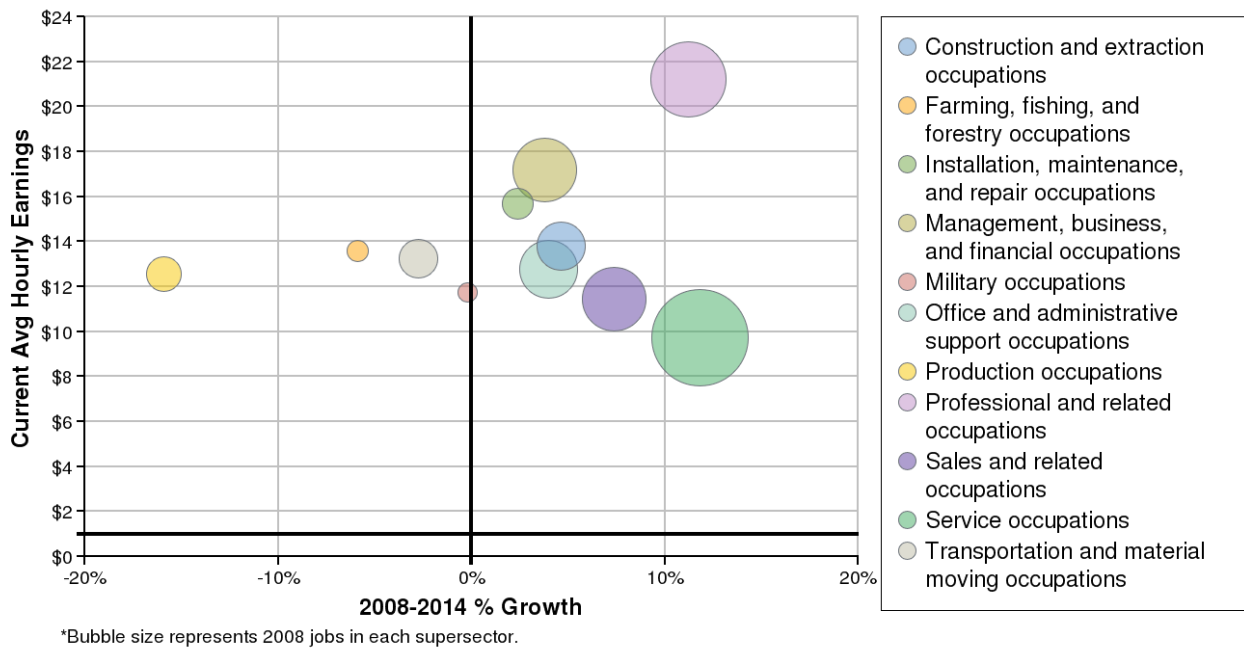


Description	2008 Regional Jobs	% Regional Jobs	2008 State Jobs	% State Jobs
Agriculture, natural resources, and mining	6,845	6.1%	95,287	1.8%
Construction	12,715	11.4%	392,429	7.2%
Education and health services	11,676	10.5%	626,896	11.5%
Financial activities	8,393	7.5%	458,018	8.4%
Government	16,393	14.7%	830,302	15.3%
Information	1,153	1.0%	85,890	1.6%
Leisure and hospitality	10,973	9.8%	466,157	8.6%
Manufacturing	8,469	7.6%	534,810	9.8%
Other services	6,066	5.4%	275,302	5.1%
Professional and business services	10,516	9.4%	723,398	13.3%
Trade, transportation, and utilities	18,497	16.6%	944,688	17.4%

Source: EMSI Complete Employment - 1st Quarter 2010

Occupation Size and Growth

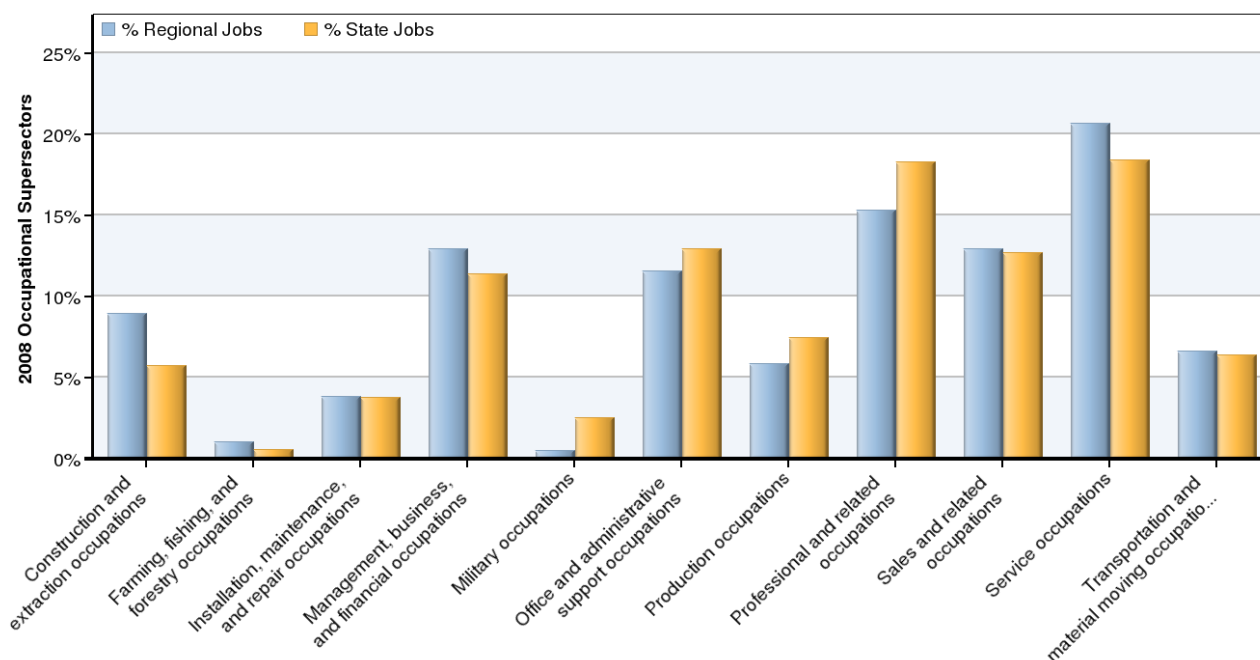
2008 - 2014 Size and Growth



Description	2008 Jobs	2014 Jobs	Growth	% Growth	Current Avg Hourly Earnings
Construction and extraction occupations	9,979	10,443	464	5%	\$13.81
Farming, fishing, and forestry occupations	1,140	1,073	-67	-6%	\$13.60
Installation, maintenance, and repair occupations	4,243	4,345	102	2%	\$15.70
Management, business, and financial occupations	14,439	14,984	545	4%	\$17.21
Military occupations	552	551	-1	0%	\$11.75
Office and administrative support occupations	12,909	13,425	516	4%	\$12.77
Production occupations	6,524	5,487	-1,037	-16%	\$12.55
Professional and related occupations	17,062	18,980	1,918	11%	\$21.23
Sales and related occupations	14,439	15,502	1,063	7%	\$11.42
Service occupations	23,046	25,770	2,724	12%	\$9.74
Transportation and material moving occupations	7,362	7,160	-202	-3%	\$13.26
Total	111,696	117,719	6,023	5%	\$14.08

Source: EMSI Complete Employment - 1st Quarter 2010

2008 Occupational Makeup

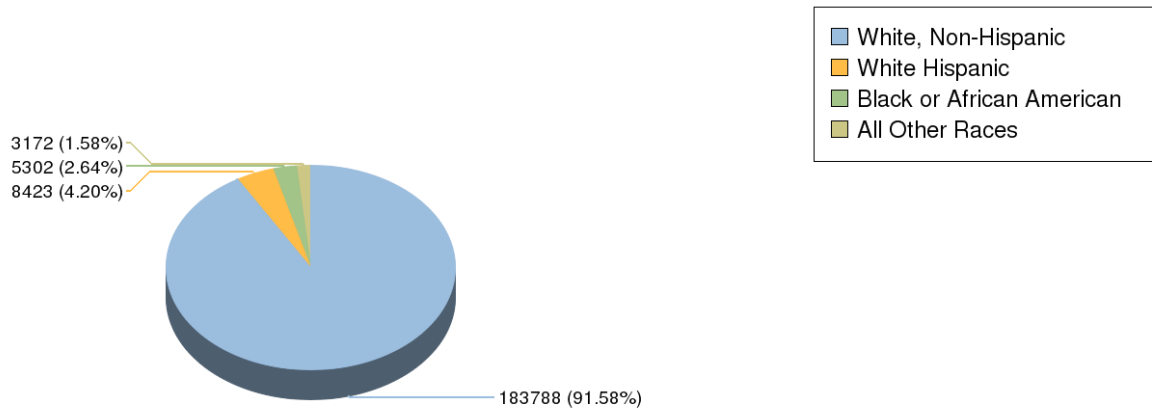


Description	2008 Regional Jobs	% Regional Jobs	2008 State Jobs	% State Jobs
Construction and extraction occupations	9,979	8.9%	310,828	5.7%
Farming, fishing, and forestry occupations	1,140	1.0%	30,668	0.6%
Installation, maintenance, and repair occupations	4,243	3.8%	203,241	3.7%
Management, business, and financial occupations	14,439	12.9%	618,539	11.4%
Military occupations	552	0.5%	137,304	2.5%
Office and administrative support occupations	12,909	11.6%	703,190	12.9%
Production occupations	6,524	5.8%	402,739	7.4%
Professional and related occupations	17,062	15.3%	991,497	18.2%
Sales and related occupations	14,439	12.9%	689,678	12.7%
Service occupations	23,046	20.6%	1,000,443	18.4%
Transportation and material moving occupations	7,362	6.6%	345,049	6.4%

Source: EMSI Complete Employment - 1st Quarter 2010

Demographic Overview

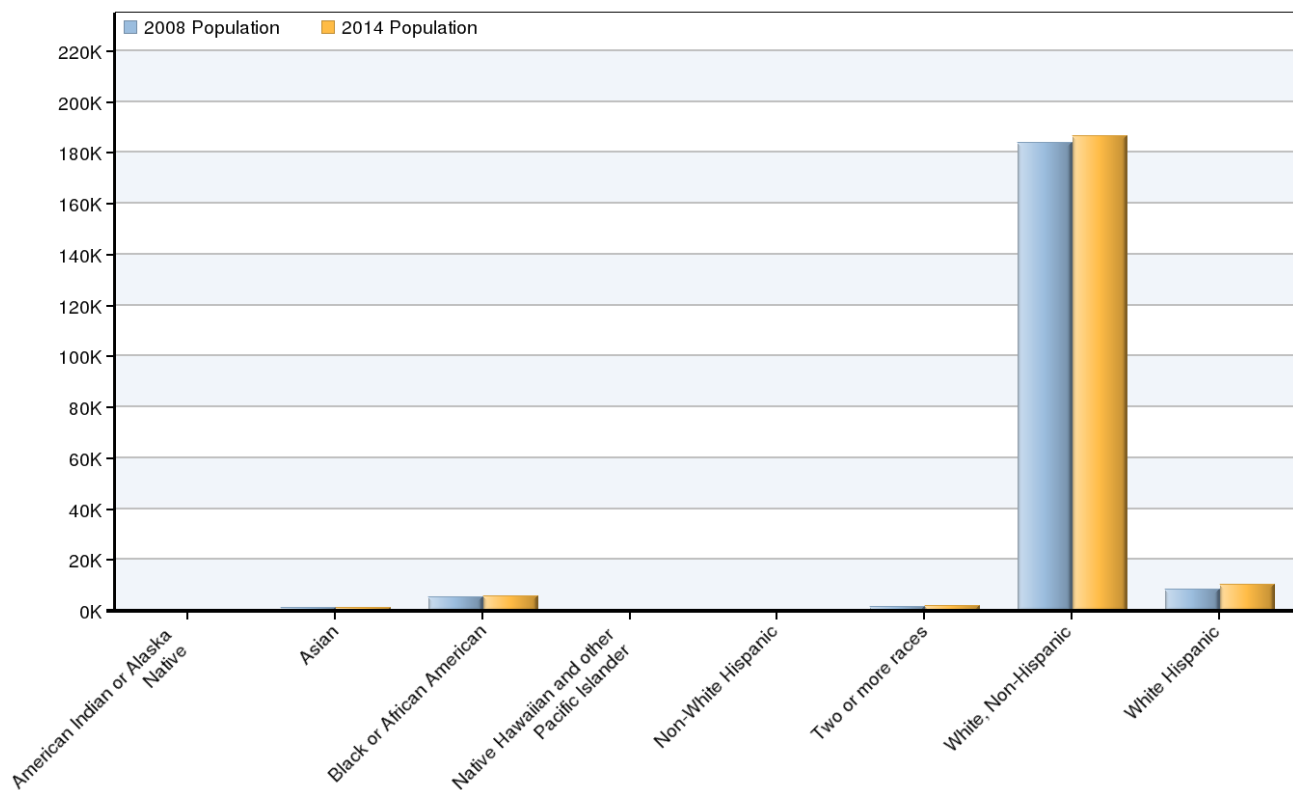
2008 Race/Ethnicity Breakdown



Ethnicity	2008 Population	% of Region
American Indian or Alaska Native	392	0.20%
Asian	987	0.49%
Black or African American	5,302	2.64%
Native Hawaiian and other Pacific Islander	27	0.01%
Non-White Hispanic	333	0.17%
Two or more races	1,433	0.71%
White, Non-Hispanic	183,788	91.58%
White Hispanic	8,423	4.20%

Source: EMSI Complete Employment - 1st Quarter 2010

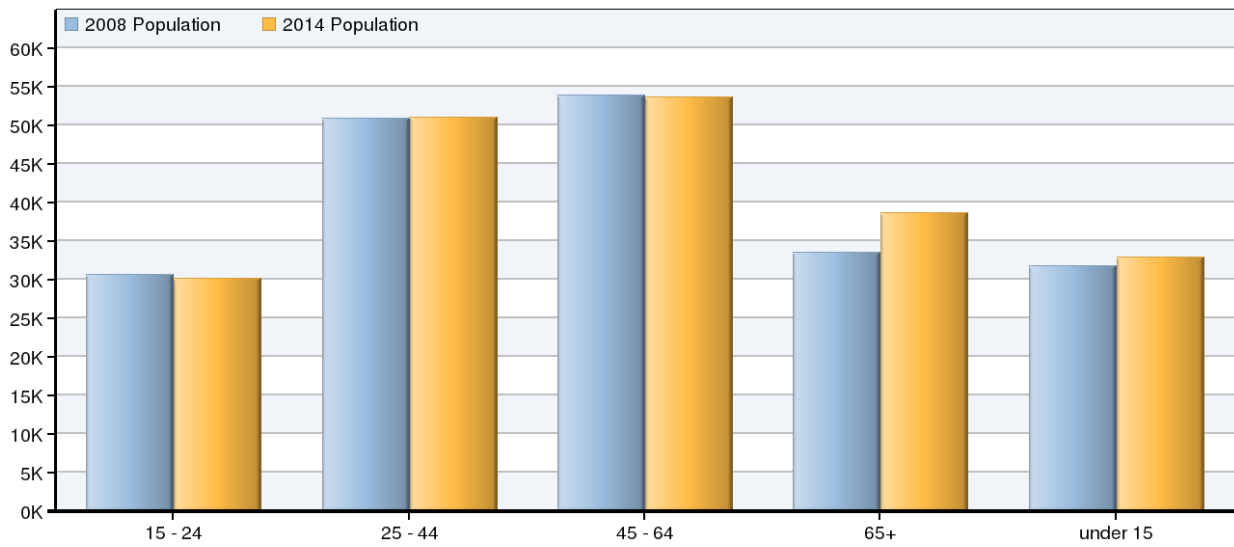
2008 - 2014 Race/Ethnicity Size and Growth



Race/Ethnicity	2008 Population	2014 Population	Change	% Change
American Indian or Alaska Native	392	430	38	10%
Asian	987	1,200	213	22%
Black or African American	5,302	5,724	422	8%
Native Hawaiian and other Pacific Islander	27	28	1	4%
Non-White Hispanic	333	363	30	9%
Two or more races	1,433	1,722	289	20%
White, Non-Hispanic	183,788	186,451	2,663	1%
White Hispanic	8,423	10,252	1,829	22%
Total	200,685	206,171	5,486	3%

Source: EMSI Complete Employment - 1st Quarter 2010

2008 - 2014 Age Size and Growth



Age	2008 Population	2014 Population	Change	% Change
15 - 24	30,666	30,109	-557	-2%
25 - 44	50,887	50,949	62	0%
45 - 64	53,898	53,672	-226	0%
65+	33,470	38,589	5,119	15%
under 15	31,763	32,852	1,089	3%
Total	200,685	206,171	5,486	3%

Source: EMSI Complete Employment - 1st Quarter 2010

Data Sources and Calculations

Industry Data

In order to capture a complete picture of industry employment, EMSI basically combines covered employment data from Quarterly Census of Employment and Wages (QCEW) produced by the Department of Labor with total employment data in Regional Economic Information System (REIS) published by the Bureau of Economic Analysis (BEA), augmented with County Business Patterns (CBP) and Nonemployer Statistics (NES) published by the U.S. Census Bureau. Projections are based on the latest available EMSI industry data, 15-year past local trends in each industry, growth rates in statewide and (where available) sub-state area industry projections published by individual state agencies, and (in part) growth rates in national projections from the Bureau of Labor Statistics.

Occupation Data

Organizing regional employment information by occupation provides a workforce-oriented view of the regional economy. EMSI's occupation data are based on EMSI's industry data and regional staffing patterns taken from the Occupational Employment Statistics program (U.S. Bureau of Labor Statistics). Wage information is partially derived from the American Community Survey. The occupation-to-program (SOC-to-CIP) crosswalk is based on one from the U.S. Department of Education, with customizations by EMSI.

Demographic Data

The demographic data in this report is compiled from several sources using a specialized process. Sources include US Census Bureau annual estimates, birth and mortality rates from the US Health Department, and projected regional job growth.

State Data Sources

This report uses state data from the following agencies: North Carolina Employment Security Commission, Labor Market Information Division.